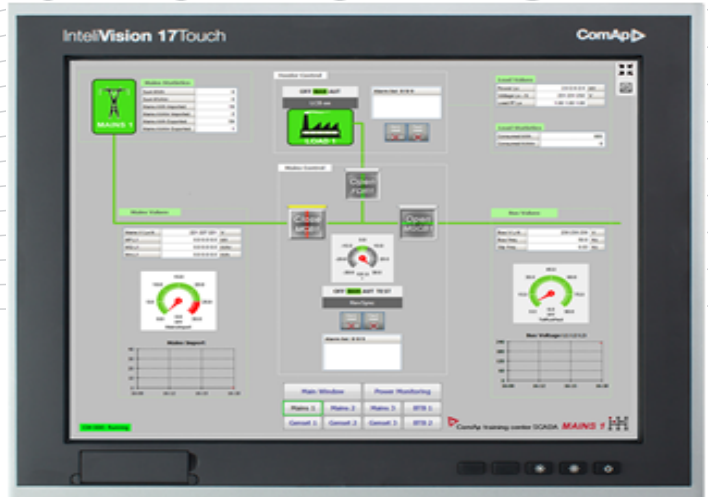


InteliVision 17 Touch



Order code: IV17T2

17" display unit for ComAp controllers

Datasheet

Product description

The new InteliVision 17Touch is a seventeen-inch touchscreen display unit for use with the range of ComAp gen-set and generator controllers. It features an extended operating temperature range and UL certification for use in complex installations. Optimized for ease of use, installation and configuration, the InteliVision 17Touch allows the monitoring and control of multiple controllers from a single screen, with the option of directly controlling gen-sets or breakers. The InteliVision 17Touch comes with SCADA software enabling users to freely configure the screen with different on-screen components, such as meters, graphs, control buttons and many more. The software also enables users to check the history of multiple controllers and change setpoints from one screen. There is also IGS-LOG software preinstalled and it is FREE of charge. The InteliVision 17Touch is designed to mount into a panel in a power distribution centre or mount onto a wall using the VESA standard mount (optional). Communication is available via standard interfaces such as RS232, Ethernet and USB.

Key features

- ▶ UL Certification
- ▶ Extended temperature range (from -20 °C up to 60 °C)
- ▶ Front panel protection to IP65 NEMA4 standard
- ▶ Robust, industrial design with passive cooling
- ▶ LED Backlit, high resolution screen
- ▶ LED Backlit, high resolution screen

- ▶ Over and under voltage protection
- ▶ Complimentary IGS-LOG included
- ▶ Monitor and control any connected ComAp controller
- ▶ Monitor and Control all GCBs and MCBs
- ▶ Change set-points from one screen
- ▶ View history logs from all connected controllers
- ▶ Full-screen, and configuration modes
- ▶ Screen can be locked with a PIN

Application overview

- ▶ Multiple Gen-sets / Controllers in one location
 - Connection via I-LB+, via InternetBridge-NT or directly using RS-232 or Ethernet (depends on system installation)
 - Status of multiple gen-sets and mains controllers is displayed on one screen
 - Multiple detailed screens available
- ▶ CHP applications
 - Connection via I-LB+, via InternetBridge-NT or directly using RS-232 or Ethernet (depends on type of controller)
 - Status of complete CHP installation displayed on one screen
 - Multiple detailed screens available

Technical data

Power supply

Power supply range	9-30 VDC
Power consumption (typical values)	1 A / 24 V
Max, Power Dissipation	41W

Operating conditions

Operating temperature	-20 to 60° C
Storage temperature	-20 to 70° C
Vibration	3 g rms / 5~500 Hz
Humidity	10~95 % at 40 °C (non condensing)
Shock	15G peak acceleration (11 ms duration)
EMC	CE / FCC-A

Interfaces

Memory	DDR3 SODIMM 4GB
LCD/CRT Controller	Integrated in Intel QM67
Ethernet port	10/100/1000Base-TX, 2 × RJ-45
I/O Port	4 × RS-232, 6 × USB2.0, VGA, Line-in/out
Storage Disk Drive	16GB SSD industrial

CPU

CPU performance	Onboard Intel® Celeron® 827E, 1.4 GHz
-----------------	---------------------------------------

LCD specification

LCD panel	17" TFT-LCD
Resolution	1280 × 1024 px
Color Depth	16.7M colors)
Luminance	350 cd/m2
Viewing Angle	170° (H) / 160° (V)
Backlight / MTBF	LED / 50000

Touchscreen

Type	5-wire resistive
Light Transmission	80 %
Lifetime	35 Million activations

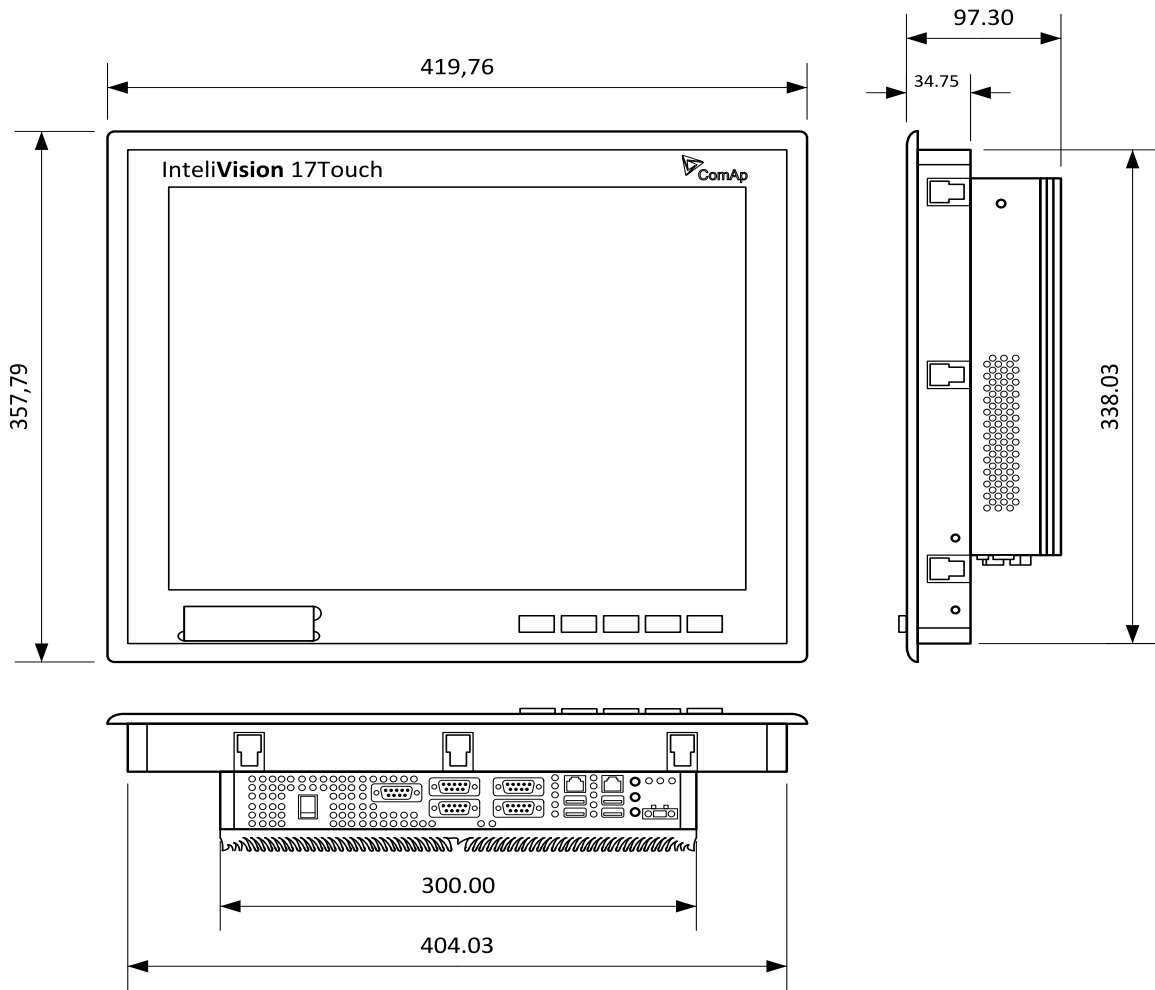
Mechanical

Housing	IP-65/NEMA4 (front)
Mounting	Panel/VESA100/Rack/Wall
Weight	10.5 kg / 8.1 kg (Gross/Net)
Recommended cut-out	405 mm × 339 mm
Dimensions	420 mm × 358 mm × 97 mm

Operating system

OS	Windows Embedded Standard 7
ComAp	InteliMonitor, IGS-LOG



Dimensions, terminals and mounting



Related products

Product	Description	Order code
InteliSys Gas	Industrial grade controller for gas gen-set based CHPs and power generation applications	I2GASXXBAB
InteliSys ^{NTC} BaseBox	Premium Parallel Gen-set Controller	IS-NTC-BB
InteliGen ^{NT} BaseBox	Complex Parallel Gen-set Controller	IG-NTC-BB
InteliMains ^{NTC} BaseBox	Mains Supervision Controller Base Unit	IM-NTC-BB
InteliGen ^{NT}	Complex Parallel Gen-set Controller	IG-NT GC
InteliSys ^{NTC} Hybrid	Hybrid system controller	IS-NTC HYBRID
InteliMains ^{NT}	Mains Supervision Controller	IM-NT GC
InteliDrive DCU Marine	Modular Certified Engine Controller for Marine Applications	ID-DCU MARINE
InteliGen ^{NT} BaseBox	Complex Parallel Gen-set Controller with Detachable Colour Display	IG-NT-BB

Certificates and standards

<p>EMC</p> <ul style="list-style-type: none"> ▶ EN 61000-3-2:2006+A1/A2:2009 ▶ EN 61000-3-3:2013 ▶ EN 55024:2010 ▶ IEC 61000-4-2:2008 ▶ IEC 61000-4-3:2006 + A1:2007+A2:2010 ▶ IEC 61000-4-4:2012 (ČSN EN 61000-4-4:2013) ▶ IEC 61000-4-5:2005 ▶ IEC 61000-4-6:2013; IEC 61000-4-8:2009 ▶ IEC 61000-4-11:2004 ▶ CISPR 22:2008 ed.6.0 (EN 55022:2010 Class A) 	 
<p>Power supply</p> <ul style="list-style-type: none"> ▶ EN 61000-4-29 - Operating Voltage 	
<p>Vibration</p> <ul style="list-style-type: none"> ▶ EN (IEC) 60068-2-6 test Fc - Sinusoidal vibration ▶ IEC 60068-2-27: Shock test 	
<p>List of standards is available on: https://webstore.iec.ch/</p>	

